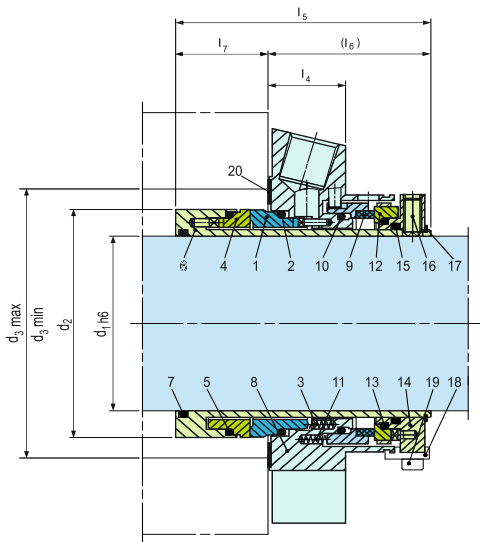




sealmatic[®]

Sealmatic Delivers CTX Seals For Asphalt & Bitumen Application On A Houttuin Pump In Netherlands



Performance Capabilities

Sizes: d_1 = Upto 100 mm (Upto 4.000")

Other sizes on request

Temperature: $t = -40\text{ °C} \dots +220\text{ °C}$

($-40\text{ °F} \dots +428\text{ °F}$)

(Check O-ring resistance)

Sliding face material combination BQ1

Pressure: $p_1 = 25\text{ bar (363 PSI)}$

Speed = 16 m/s (52 ft/s)

Bitumen and Asphalt have been construction mainstays for five millennia, so have the challenges that must be overcome in their handling. Pumps and Mechanical Seals play a prominent role throughout asphalt's production and supply chains, meaning that identifying and implementing a sealing technology that is able to meet the challenges of handling asphalt must be a top-of-mind consideration for the operator. Asphalt pumps are required all along asphalt's production and supply chains, they can be found at refineries where raw asphaltic products are produced, terminals where various asphaltic products are stored and hot-mix plants where paving products are produced. Specially configured asphalt pumps are at the heart of these and other systems that rely on robust mechanical seals as their base for production. Mechanical seal is by far one of the most significant challenges to overcome in an asphalt application, in particular when a leak-free condition is desired. Houttuin developed the original pump design that is the blue print for today's low-pressure, twin-screw positive displacement rotary pumps. Designed and built for high-quality, energy saving and cost-effective is equipped with Sealmatic's CTX seal.

API SPEC Q1 . API . ISO 9001:2015 . EU 1935:2004 . ATEX - 2014/34/EU . ISO 9001:2015 . ISO 14001:2015 . BS-OHSAS 18001:2007 . PED-CE

January 2018

Mira Road (E), Thane 401104, India.

T: +91 22 50502700 / +91 9820261376 E: info@sealmaticindia.com

www.sealmaticindia.com

