



sealmatic[®]

Sealmatic Delivers 23 API 682 4th Edition Mechanical Seals: IOCL Haldia - OISD Project – Conversion of 22 single mechanical seals to double mechanical seals

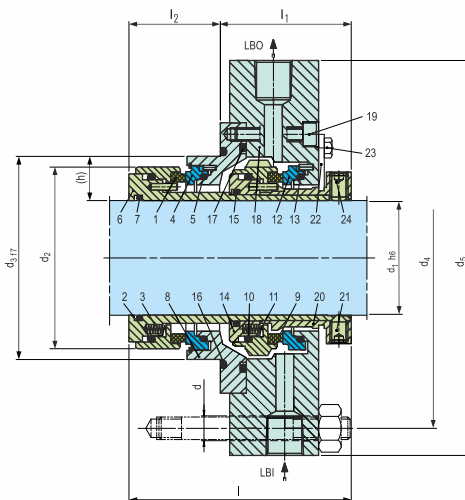
The Petroleum Ministry entrusted the well renowned OISD (OIL INDUSTRY SAFETY DIRECTORATE) with the task to undertake measures aimed at enhancing the safety in the Oil & Gas industry in India. Under this mandate various refineries in India undertook the projects of converting single mechanical seals to double mechanical seals in compliance with API standards.

We are extremely pleased to mention that under the OISD norms Sealmatic has successfully executed an order for various pumps in the DHDS plant at IOCL Haldia to meet demanding operating conditions as mentioned below, thus bringing areas of design, operation and maintenance with a view to achieve the highest safety standards in a cost-effective manner.

Sealmatic offers the widest portfolio of seals and seal supply systems in accordance with API 682 4th edition. Sealmatic's API-compliant mechanical seals offer technically competent, practical solutions that provide significantly greater safety and process reliability in refining technology, petrochemical, oil & gas and chemical industries.

API 682 4th Edition Mechanical Seals OISD Project IOCL Haldia													 Sealmatic India Pvt Ltd.	
Sr No	Plant	Unit	Seal Drawing No.	Speed	API Plans	Media	Temp. Max °C	Viscosity .cP	Specific gravity	Suction pressure kg/cm ² A	Discharge pressure kg/cm ² A	Vapor pressure kg/cm ² A	Seal Type	
1	DHDS	SHS	91-B750VK/90-PTa3 R1	2950	32, 52	SOUR WATER	51	0.648	0.9875	3.4	12.2	0.13	API	
2	DHDS	SHS	91-B750VK/90-PTa4 R1	2950	32, 52	SOUR WATER	105	0.244	0.6855	4.5	12	2.28	API	
3	DHDS	SWSU	91-B750VK/70-PTa4 R1	2950	11, 52	SOUR WATER	80	0.51	1	5.3	12.57	1.4	API	
4	DHDS	FCCU	91-CTX-API-DN/48-PTa1 R1	2915	11, 52	SOUR WASH WATER	38	0.68	0.993	5.5	10.5	1.52	API	
5	DHDS	FCCU	91-CTX-API-DN/48-PTa1 R1	2980	11, 52	LEAN AMINE	82	0.62	0.989	6.35	23	0.5	API	
6	DHDS	FCCU	91-CTX-API-DN/48-PTa2	2980	11, 52	LEAN AMINE	82	0.62	0.989	6.35	23	0.5	API	
7	DHDS	ARU	91-CTX-API-DN/48-PTa3 R1	2950	11, 52	LEAN AMINE	83	0.609	0.983	6.4	16.4	0.55	API	
8	DHDS	SWSU	91-CTX-API-DN/28-PTa1 R1	2950	32, 52	SOUR WATER	90	0.21	0.867	7.6	8.3	2	API	
9	DHDS	SWSU	91-B750N/40-PTa1	2900	11, 13, 52	SOUR WASH WATER	44.3	0.19	0.986	5.5	9.27	1	API	
10	DHDS	SWSU	91-B750VK/60-FTa5 R1	2950	21, 52	SOUR WATER	128	0.25	1	8	12.62	2.5	API	
11	DHDS	ARU	91-CTX-API-DN/35-PTa3 R1	2910	11, 52	H2S RICH WATER	40	0.672	0.992	5.5	8.8	2.07	API	

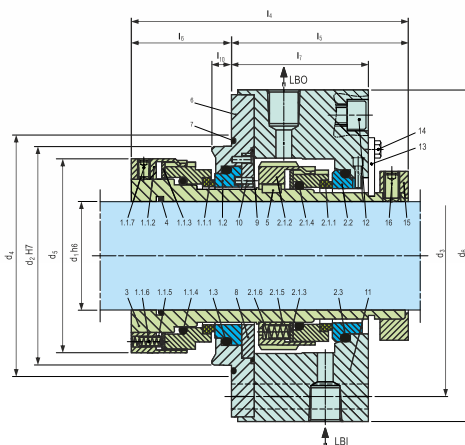
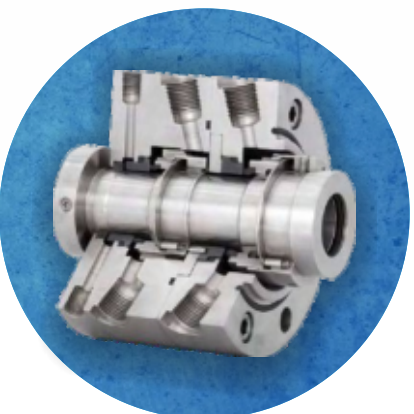
CTXAPI Single & Dual Seals



Performance Capabilities

Sizes: $d_1 =$ Upto 110 mm (Upto 4.250")
 other sizes on request
 Pressure: $p_1 = 22$ bar (319 PSI)
 Temperature: $t = -40$ °C...+260 °C
 (-40 °F...+500 °F)
 Speed = 23 m/s (75 ft/s)

B750VK Dual Seals



Performance Capabilities

Sizes: $d_1 =$ Upto 110 mm (Upto 4.250")*
 Pressure: $p_1 = 40$ bar (580 PSI)
 Temperature: $t = -40$ °C...+220 °C
 (-40 °F...+428 °F)
 Speed = 23 m/s (75 ft/s)
 Permissible axial movement: $\pm 2.0 \dots 4.0$ mm
 depending on diameter and installation situation
 * Other sizes on request

