



Sealmatic Successfully Delivers Gas Lubricated (Non-Contacting Containment Seals) As Per API 682 4th Edition Category 2 And 3 Gas Lubricated Mechanical Seal Type CTX GSDN And B750VN GSPH Along With Plan 72 And Plan 76 For Refinery Processes.

Sealing technology for critical applications in refinery processes have to meet challenges in various respects; risk of insufficient lubrication and dry running, media with a diversity of physical properties, high and low temperature ranges and the handling of hazardous substances and all other conditions which need to be controlled with absolute reliability.

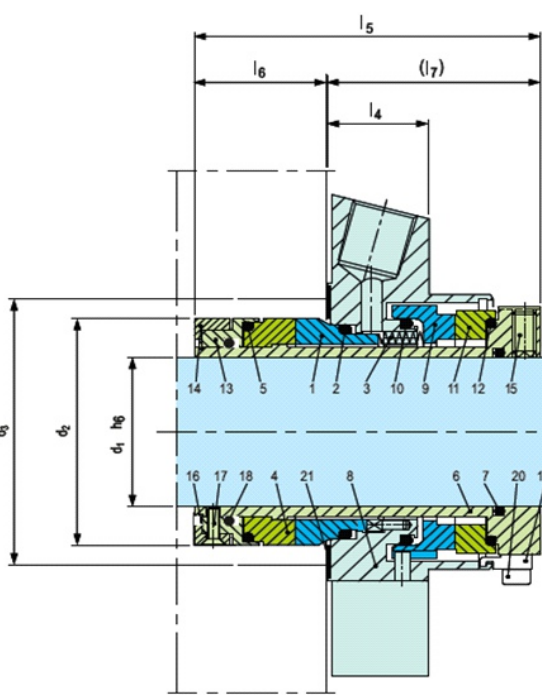
Sealmatic has successfully executed an order for various pumps in the refinery processes to meet demanding operating conditions as mentioned below, thus bringing areas of design, operation and maintenance with a view to achieve highest safety standards in a cost-effective manner.

Sealmatic's comprehensive range of API- compliant - Gas Lubricated Containment Mechanical Seals and Gas Supply Systems offers technically competent, practical solutions that provide significantly greater safety and process reliability in refining technology, petrochemical, oil & gas and chemical industries.

Gas Lubricated Mechanical Seal Type CTX GSDN And B750VN GSPH Along With Plan 72 And Plan 76 For Refinery Processes.									
Sr No	Seal Drawing No.	Speed (RPM)	API Plans	Media	Temperature (°C)	Stuffing Box Pressure (kg/cm <sup>2</sup> g)	Suction pressure(kg/cm <sup>2</sup> g)	Discharge Pressure (kg/cm <sup>2</sup> g)	Seal Type & API Code
1	91-CTX-GSDN-SP/38-G911	1470	72,76	Raffinate + Methanol + MTBE	60°C	0.6 – 0.7 kg/cm <sup>2</sup> g	0.4 – 4 kg/cm <sup>2</sup> g	18 kg/cm <sup>2</sup> g	API 12A – CI/FN – 038 – 72/76
2	91-CTX-GSDN-SP/38-G912								
3	91-CTX-DN-SP/43-GSPH1	1950	11,72,76	BBF (Liquified Hydrocarbon Gas)	30°C	4.2 kg/cm <sup>2</sup> g	2.5 kg/cm <sup>2</sup> g	15 kg/cm <sup>2</sup> g	API 12A – CI/FN – 043 – 11/72/76
4	91-CTX-DN-SP/43-GSPH2								
5	91-CTX-DN/60-GSPH1	2975	72,76	Raffinate	40°C	7 kg/cm <sup>2</sup> g	3 kg/cm <sup>2</sup> g	28 kg/cm <sup>2</sup> g	API 12A – CFN – 060 – 72/76
6	91-CTX-DN/60-GSPH2								
7	91-CTX-GSDN/32-G911	1455	72,76	Fraction C5	40°C	6.5 kg/cm <sup>2</sup> g	2 kg/cm <sup>2</sup> g	20 kg/cm <sup>2</sup> g	API 12A – CFN – 032 – 72/76
8	91-CTX-GSDN/32-G912								
9	91-CTX-GSDN/32-G913	1455	72,76	Fraction C5	40°C	6.5 kg/cm <sup>2</sup> g	2 kg/cm <sup>2</sup> g	20 kg/cm <sup>2</sup> g	API 12A – CFN – 032 – 72/76
10	91-CTX-GSDN/32-G914								
11	91-CTX-DN-SP/43-GSPH3	1480	11,72,76	Propane Butane Fraction	30°C	9 kg/cm <sup>2</sup> g	6.5 kg/cm <sup>2</sup> g	20 kg/cm <sup>2</sup> g	API 12A – CFN – 043 – 11/72/76
12	91-CTX-DN-SP/43-GSPH4								
13	91-CTX-DN/32-GSPH1	2940	72,76	Normal Butane	50°C	19 kg/cm <sup>2</sup> g	5.6 kg/cm <sup>2</sup> g	35 kg/cm <sup>2</sup> g	API 12A – CFN – 032 – 72/76
14	91-CTX-DN/32-GSPH2								
15	91-B750VN/85-GSPH2	2940	72,76	ISO-Butane Fraction	35°C	8 kg/cm <sup>2</sup> g	4 kg/cm <sup>2</sup> g	18 kg/cm <sup>2</sup> g	API 22A – CFN – 070 – 72/76
16	91-B750VN/75-GSPH1	2950	72,76	BBF (Liquified Hydrocarbon Gas)	40°C	5 kg/cm <sup>2</sup> g	2 kg/cm <sup>2</sup> g	10 kg/cm <sup>2</sup> g	API 22A – CI/FN – 060 – 72/76
17	91-B750VN/75-GSPH2								

### Mechanical Seal Type CTX – GSDN Dual Seal

Type CTX - GSDN is a balanced dual seal design having the configuration of 2CW – CS (Contacting Wet – Containment Seal) it offers trouble free operations as complex components are not required to dissipate frictional heat, seal faces are designed to be non-contacting during operation.

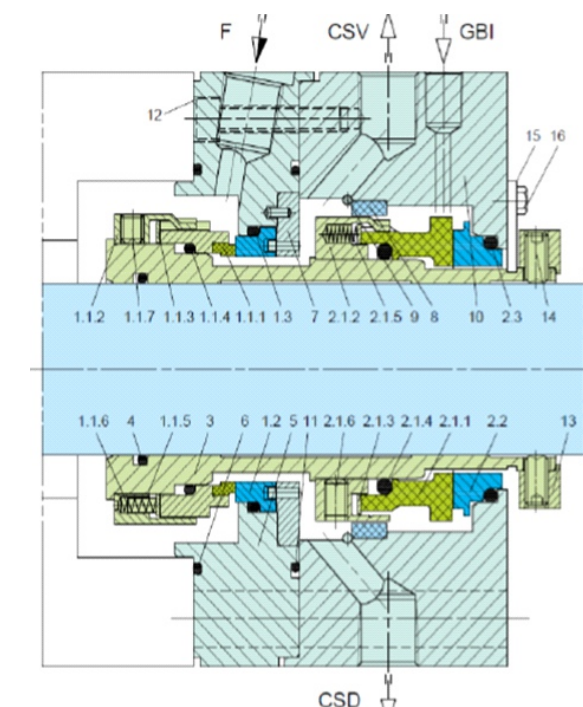


### Performance Capabilities

- Shaft diameter: d1 = 30 ... 100 mm (1.18" ... 3.94")
- Pressure: with V-grooves (uni-directional)
  - ✓ p1 = 13 bar (189 PSI),
  - ✓ p3 = 16 bar (232 PSI)
- Pressure: with U-grooves (bi-directional)
  - ✓ p1 = 9 bar (131 PSI),
  - ✓ p3 = 12 bar (174 PSI)
- Operating temperature limits for:
  - ✓ EPDM -20 °C ... +140 °C (-4 °F ... +284 °F)
  - ✓ FFKM - 5 °C ... +300 °C (+23 °F ... +572 °F)
  - ✓ FKM -20 °C ... +170 °C (-4 °F ... +338 °F)
- Speed = 4 ... 15 m/s (13 ... 49 ft/s)
- Axial movement: ± 1.0 mm

### Mechanical Seal Type B750VN – GSPH Dual Seal

Type B750VN – GSPH is a balanced dual seal design having the configuration of 2CW – CS (Contacting Wet – Containment Seal), it is safely operated due to metal torque transmission at the rotating carbon seal rings.



### Performance Capabilities

- Shaft diameter: d = 20 ... 110 mm (0.79" ... 4.33")
- Pressure: p1 = 42 bar (609 PSI)
- Temperature: t = -40 °C ... +176 °C (-40 °F ... +350 °F)
- Sliding velocity: vg = 23 m/s (76 ft/s)
- Axial movement: ±1.0 mm

August 20th 2021

