



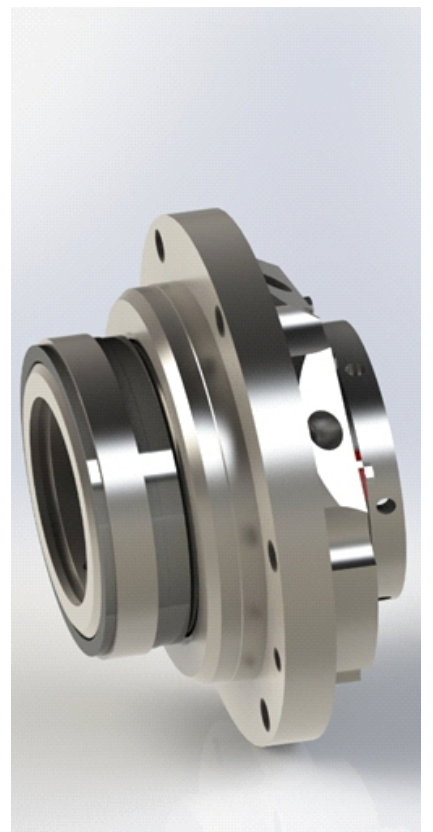
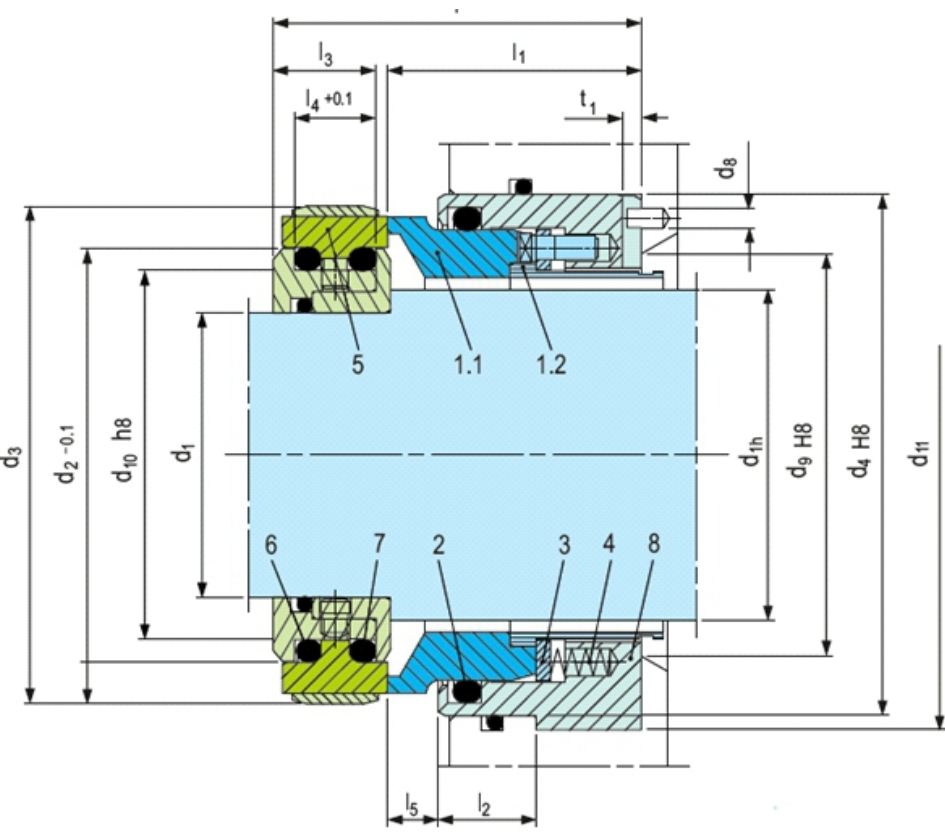
Sealmatic Delivers Its Type BR Single Mechanical Seals For Slurry Applications

Slurry is a mixture of denser solids suspended in liquid, typically water. The most common usage of slurry is as a means of transporting solids or separating minerals, the liquid being a carrier that is pumped on a device such as slurry pump. The size of solid particles may vary from one micrometre up to hundreds of millimetres. Depending on the mixture, the slurry may be abrasive and corrosive. The application involved in slurry application are of harsh environment, the equipment undergoes high stress and thus require a further degree of reliability until they carry out their function in maximum safety and productivity.

The sealing systems are specially intended for such application. Sealmatic mechanical seals are designed for higher capacities and performance, improvements to the structure design for increasing the stress resistance so that they can adapt more severe conditions. Hence increasing the productive life, growing the continuity of safety in the productive phase, and guaranteeing the perfect functionality of the equipment.

Operating Parameters of BR Single Mechanical Seals For Slurry Application							
Sr. No.	Mechanical Seal Type	Media	Temperature (°C)	Stuffing Box Pressure (kg/cm ²)	API Plan	PH Value	Specific Gravity
1	91-BRS730-QEG/80-G913 R1	Waste Water Slurry	80°C	4 kg/cm ²	62	6	1.017
2	91-BRS730-QEG/95-G912 R2	Limestone Slurry	80°C	4 kg/cm ²	62	6	1.212
3	91-BRS730-QEG/95-G912-A1 R2	Limestone Slurry	65°C	8 kg/cm ²	62	6	1.5
4	91-BRS730-QEG/120-G912 R2	Gypsum Slurry	80°C	6 kg/cm ²	62	6	1.107
5	91-BRS730-QEG/135-G911 R2	Max 7% solid conc. particles size 6 – 7 mm	80°C	2 kg/cm ²	62	6	1.011
6	91-BRS730-QEG/135-G911-A1 R2	Gypsum Slurry	80°C	2 kg/cm ²	62	6	1.107
7	91-BRS730-QEG/135-G911-A2 R2	Gypsum Slurry	80°C	4 kg/cm ²	62	6	1.107
8	91-BRS730-QEG/135-G911-A3 R2	Gypsum Slurry	80°C	3 kg/cm ²	62	6	1.107

We are pleased to announce that Sealmatic type BR mechanical seal has been successfully delivered for a slurry application. Thus, offering tailor made solutions, safety in operation and maintenance with a view to achieve highest safety standards.



Sealmatic Type BR Single Mechanical Seals For Slurry Application

Type BR is a balanced mechanical seal mainly designed for slurry application. The shaft sleeve of the seal is specially designed to protect the springs from contamination. The seat design of type BR seal is rotary and designed behind the impeller. Moreover, the O-ring is dynamically loaded to prevent shaft damage, the seal can also operate under vacuum without locking the seat.

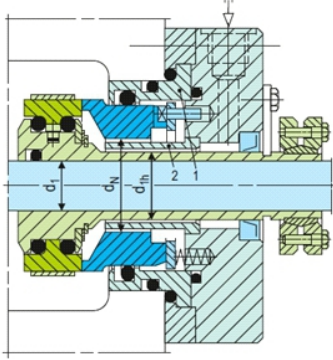
Performance Capabilities

- Sizes: dN = Upto 270 mm (Upto 10.625")
- Pressure: p1*) = 16 bar (230 PSI)
- Temperature: t = -20 °C ...+160 °C (-4 °F ...+320 °F)
- Speed = 10 m/s (33 ft/s)

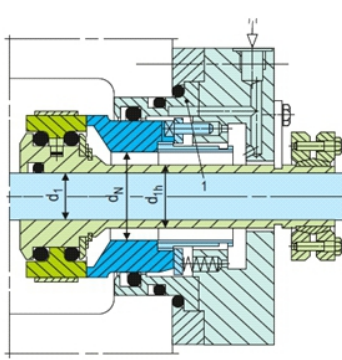
Typical Industrial Applications

- Water and waste water technology
- Dirty, abrasive and solids containing media
- Dredger pumps
- Mining industry
- Oil and gas industry
- Oil sand extraction plants
- Power plant technology
- Pulp and paper industry
- Sewage water pumps
- Scrubbers in FGD plants

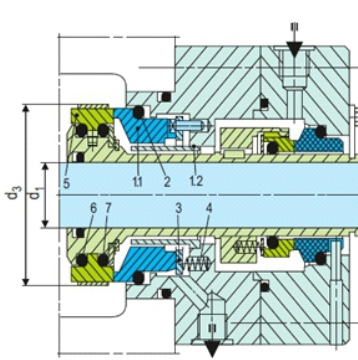
Design Variations



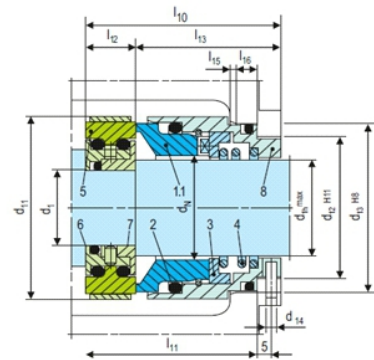
BR200
Cartridge-type single seal with guide sleeve (Item no. 2) for use with quench. Insert (Item no. 1) either metal or silicon carbide.



BR300
Cartridge-type single seal. Insert (Item no. 1) either metal or silicon carbide. Optional without maintenance rinsing.



BRKS-D
Double seal in cartridge design for operation in barrier or buffer pressure (does not open if barrier pressure fails), available alternatively with a pumping screw for a higher rate of circulation. Torque transmission e.g. by shrink disk.



BRZ100
Single seal with cylindrical spring and type G76 seat. For installation in covers with installation dimensions according to EN 12756 B or U. Installation length l_{11} corresponds to max. l_{13} . Intermediate sizes on request.

10th July 2023

